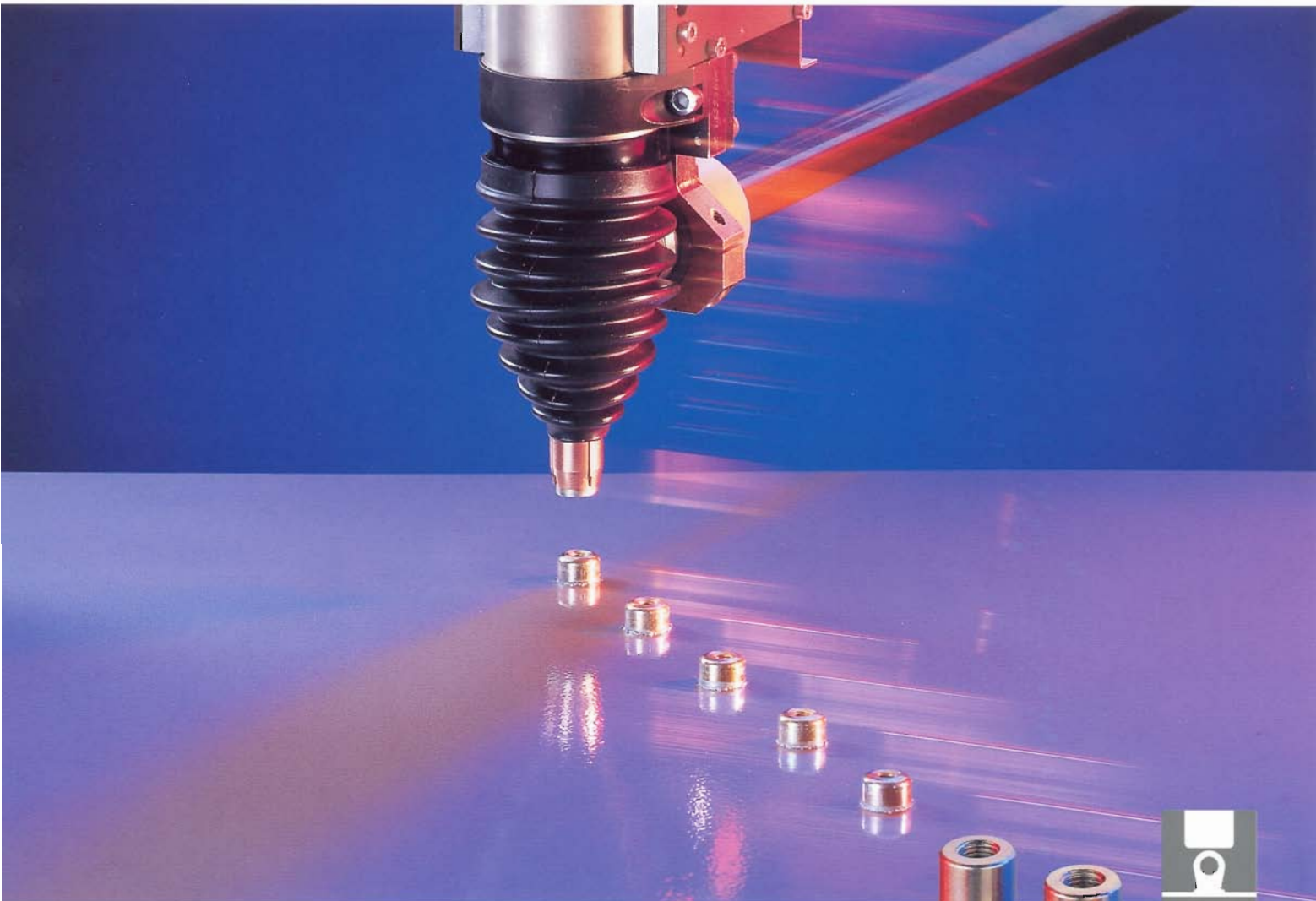


The TUCKER Weld Nut System.

Quick rational application!

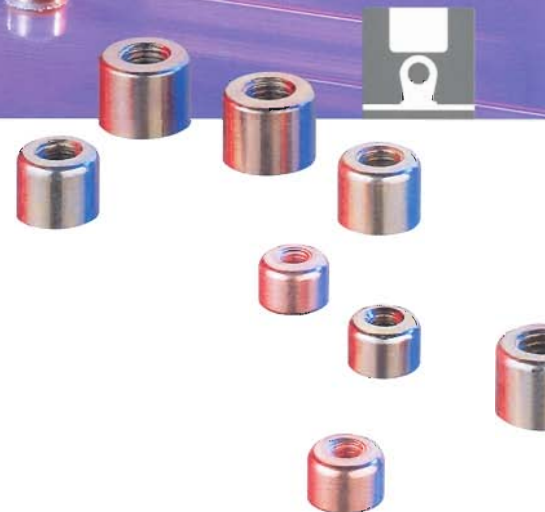


A secure method of assembly!

Today there are two popular methods of applying nuts to metal body parts and components; mechanical systems during press operations or by means of resistance welding as a secondary application. Both processes require access from two sides – mechanical systems are susceptible to vibration and/or corrosion, and resistance welded nuts are hidden with the risk of troublesome repair solutions, in the event of failure, together with high handling costs and space utilization.

A more rational solution is available with TUCKER weld nut systems. Nuts are arc welded by means of the WELDFAST method developed by TUCKER, with obvious advantages:

- Only single sided access necessary
- Flexible automated process planning
- High strength (Class 8 material)
- Reduced handling costs



**Emhart[®]
Teknologies**
TUCKER[™]

The TUCKER Weld Nut System.

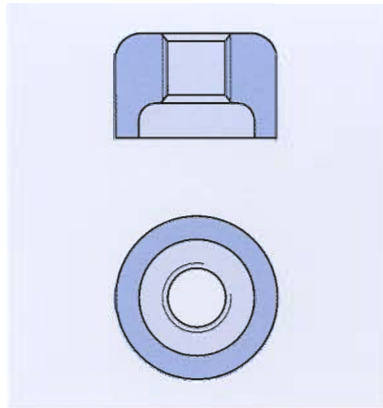
A secure method of assembly!

The nuts.

High strength – class 8 material!

Produced by cold forming, the nuts have a special geometry with large outer diameter to enable secure positive bond to the base material.

With a domed radius profile – without sharp edges – the welded assembly eliminates possible damage to cables during other processes.

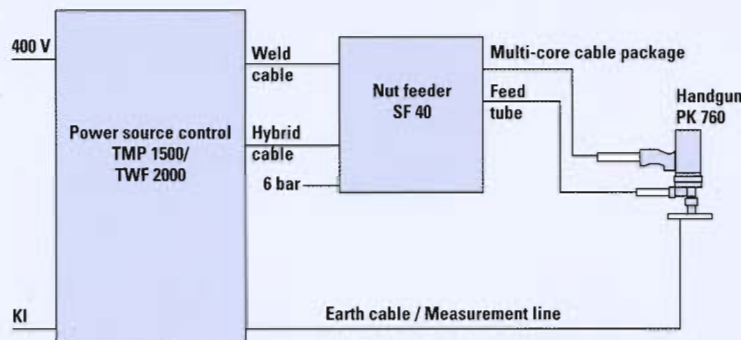


TUCKER Weld Nuts

| | |
|--------------------------|--|
| Thread: | M 6 to M 10 |
| Diameter nut: | 14 to 22 mm |
| Thread depth: | 5 to 11 mm |
| Material: | Steel, copper plated/galvanised (stainless steel V 2A) |
| Tensile strength: | M 6 17200 N M 8 31800 N M 10 50500 N |

Semi-automatic system configuration

PK 760 – Autofeed handgun for nuts



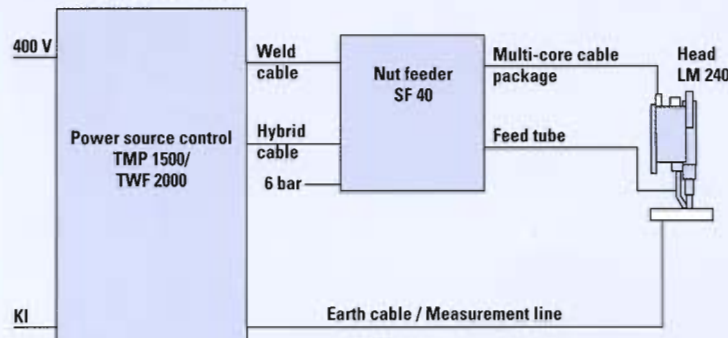
Fast, safe and secure!

Tried and tested TUCKER technology assures quality, integrity and high performance, whether using semi-automated systems by operator or fully robotised automated production by weld head.

At a speed of up to 30 nuts per minute and energy consumption of only approximately 0,8 KVA per weld, TUCKER weld nut systems offer a very competitive alternative to traditional resistance welding.

Fully-automatic system configuration

LM 240 – Autofeed weld head for nuts



Emhart Fastening Technologies
Automotive Division
P. O. Box 868
Mt. Clemens, MI 48046
USA
Tel. 001/810/949 04 40
Fax 001/810/949 84 60

<http://www.emhart.com>

Emhart Fastening Technologies
NPR Division
3rd Floor Park Building
No. 6 Kioicho 3 Choume
Chiyoda-hu / Tokyo 102
JAPAN
Tel. 0081/33/265 72 91
Fax 0081/33/265 72 98

Emhart Fastening Technologies
Automotive Division
TUCKER GmbH
P. O. Box 11 13 29
D-35387 Gießen / GERMANY
Max-Eyth-Straße 1
D-35394 Gießen / GERMANY
Tel. 0049/641/405-0
Fax 0049/641/405-300

Emhart®
Teknologies
TUCKER™

A BLACK & DECKER COMPANY